

# ROYAL STEEL COLLECTION

—

OPERATING INSTRUCTIONS AND MAINTENANCE



SJÖ SANDSTRÖM

STOCKHOLM



The experience of time, not time passing by.

An intuition born from the breathtaking  
continuity and delicate poise of a

Scandinavian moment. We express these  
enduring qualities through handcrafted  
elegance and state of the art technology.

Through small-scale manufacturing that  
celebrates both the analogue and electronic.

This is our experience. This is our time.

The logo features a stylized 'S' and 'S' with a triangle between them, positioned above the brand name.  
**SJÖ SANDSTRÖM**  
STOCKHOLM



## SJÖÖ SANDSTRÖM

---

Our story is a timely journey starting out in Stockholm in 1986. At this time, the two engineers and watch aficionados Christer Sjöö and Mikael Sandström visualize a bridge between tradition and technology. They ask themselves whether craftsmanship and high-tech innovation can symphonize in one single watch. And soon an idea is born. Honing their skills, they introduce the Automatic in 1993, an elegant handmade watch that goes on to win the esteemed Excellent Swedish Design award in 1995. Sjöö Sandström is today one of the few independent watch manufacturers in the world and one of the most coveted brands. Adhering to small-scale manufacturing and combining tradition, innovation and design, we honor the Swedish heritage of skilled watchmaking. Each Sjöö Sandström model is produced in exclusive series and every timepiece is meticulously tested before release.

## TECHNICAL SPECIFICATIONS

---

**CASE:** Stainless steel case, Ø41 mm or Ø 36,4 mm.

**CASEBACK:** See-trough caseback. Individually numbered.

**GLASS:** Scratch-resistant domed sapphire crystal with anti-reflection coating.

**CROWN:** Crown with logotype.

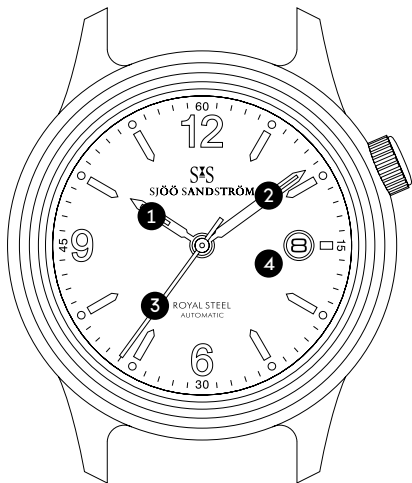
**WATER RESISTANCE:**  
100 meters (10ATM).

**MECHANICAL MOVEMENT:**  
Self-winding SS G7. Hour, minutes, sweep second. Date corrector. Stop second device. 28.800 vibrations per hour, 4Hz. 25 Jewels.

## FUNCTIONS

—

- 1 Hour hand of the watch
- 2 Minute hand of the watch
- 3 Second hand of the watch
- 4 Date indicator



Ø41

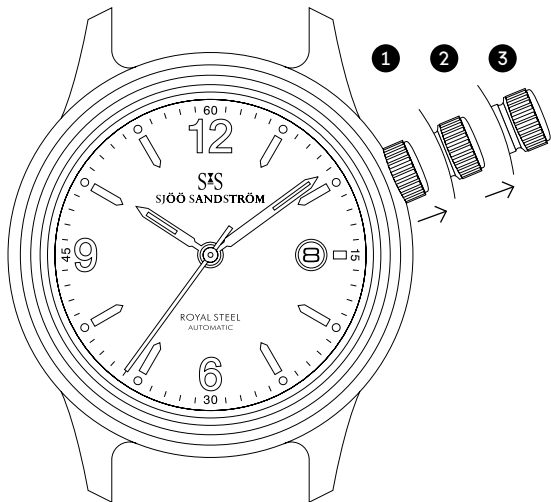
## TO SET THE TIME AND DATE

---

- 1** Normal position. This position allows you to wind up your watch manually. Pull the crown to position 2.
- 2** Date corrector position. Turn the crown counterclockwise to correct the date. Pull the crown to position 3.
- 3** Time corrector position. Turn the crown counterclockwise setting the local time. Remember to always push the crown back to final position 1. Always have the crown in position 1 while submerged under water.



ROYAL STEEL CLASSIC



## TECHNICAL SPECIFICATIONS

---

**CASE:** Stainless steel case, Ø32 mm.

**CROWN:** Crown with logotype.

**CASEBACK:** Engraved caseback.  
Individually numbered.

**WATER RESISTANCE:**  
100 meters (10ATM).

**GLASS:** Scratch-resistant domed sapphire crystal with anti-reflection coating.

**MECHANICAL MOVEMENT:**  
Electronic SS L1. Hour, minute, sweep second. Date corrector. Stop device and interrupter. Battery end of life display (E.O.L). 7 Jewels.

## FUNCTIONS

—

- 1 Hour hand of the watch
- 2 Minute hand of the watch
- 3 Second hand of the watch
- 4 Date indicator



Ø32

## TO SET THE TIME AND DATE

—

- 1 Normal position. Pull the crown to position 2.
- 2 Date corrector position. Turn the crown clockwise to correct the date. Pull the crown to position 3.
- 3 Time corrector position. Turn the crown counterclockwise setting the local time. Remember to always push the crown back to final position 1. Always have the crown in position 1 while submerged under water.

ROYAL STEEL CLASSIC LADY



## TECHNICAL SPECIFICATIONS

---

**CASE:** Stainless steel case polished and satin brushed. Ø42 mm.

**CASEBACK:** See-through engraved caseback with flat sapphire crystal.

**GLASS:** Scratch-resistant domed sapphire crystal with anti-reflection coating.

**PUSH-BUTTONS AND CROWN:** Screwed push-buttons and crown with logotype.

**WATER RESISTANCE:** 100 meters (10ATM).

**MECHANICAL MOVEMENT:** Self winding SS G3. Hour, minutes, small second. Stop second device. 28.800 vibrations per hour, 4 HZ. 30 minutes and 12 hours counter. Date corrector. 25 Jewels.

## FUNCTIONS

- 1 Hour hand of the watch
- 2 Minute hand of the watch
- 3 Second hand of the watch
- 4 Date indicator
- 5 Chronograph indication of minutes
- 6 Chronograph indication of seconds
- 7 Chronograph indication of hours



Ø42

## TECHNICAL SPECIFICATIONS

---

**CASE:** Stainless steel case polished and satin brushed. Ø35,5 mm.

**CASEBACK:** Engraved caseback. Individually numbered.

**GLASS:** Scratch-resistant domed sapphire crystal with anti-reflection coating.

**PUSH-BUTTONS AND CROWN:** Screwed push-buttons and crown with logotype.

**WATER RESISTANCE:** 100 meters (10ATM).

**MECHANICAL MOVEMENT:** Electronic SS L2 (Swiss made). Hour, minute and small jumping second at 6 o'clock. Time Zone mechanism. Mechanical date indicator. Stop second device. Chronograph 1/10 second, 60 second, 30 minutes.



## FUNCTIONS

- 1 Hour hand of the watch
- 2 Minute hand of the watch
- 3 Second hand of the watch
- 4 Date indicator
- 5 Chronograph indication of minutes
- 6 Chronograph indication of seconds
- 7 Chronograph indication of 1/10 second



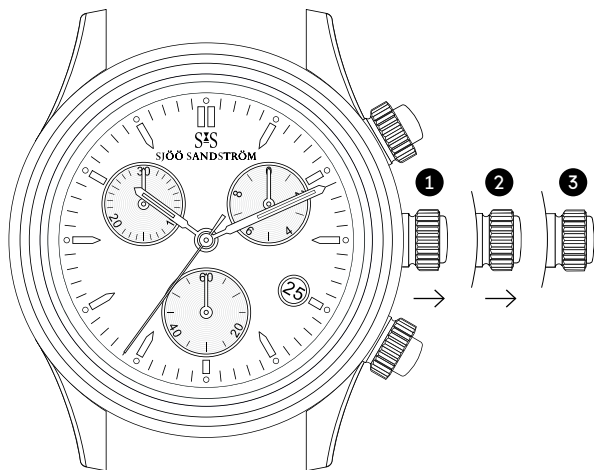
Ø35.5

## TO SET THE TIME AND DATE

—

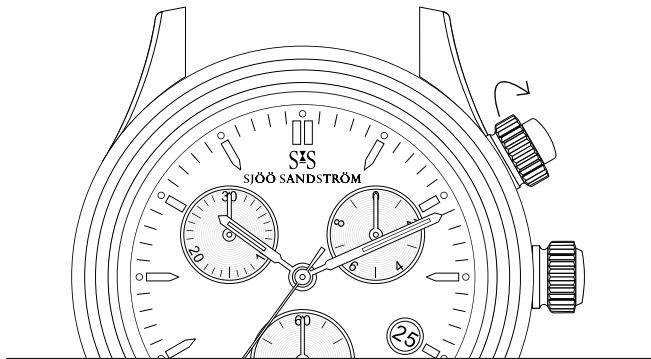
- 1 Normal position. Pull the crown to position 2.
- 2 Date corrector position. Turn the crown counterclockwise to correct the date. Pull the crown to position 3.
- 3 Time corrector position. Turn the crown counterclockwise setting the local time. Remember to always push the crown back to final position 1. Always have the crown in position 1 while submerged under water.

ROYAL STEEL CHRONOGRAPH/LADY SETTINGS



## STARTING/STOPPING THE CHRONOGRAPH

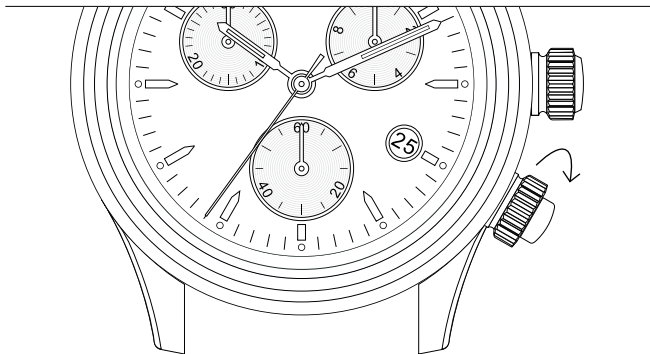
—



**START/STOP BUTTON:** Unscrew the pusher counterclockwise and press when starting/stopping the chronograph. Make sure that the push button is tightened after using the functions of the chronograph. Do not use the pushers while submerged under water.

## RESETTING THE CHRONOGRAPH

---



**RESET BUTTON:** Unscrew the pusher counterclockwise and press when resetting the chronograph. Make sure that the push button is tightened after using the functions of the chronograph. Do not use the pushers while submerged under water.

## TECHNICAL SPECIFICATIONS

---

**CASE:** Stainless steel case, Ø41 mm or Ø36,4 mm.

**CASEBACK:** See-through caseback. Individually numbered.

**GLASS:** Scratch resistant sapphire crystal with anti-reflective coating.

**BEZEL:** 24-hour bezel.

**WATER RESISTANCE:** 100 meters (10ATM).

**BRACELETS:** Rubber or Stainless steel bracelet.

**MECHANICAL MOVEMENT:** Self winding SS G14. Hour, minutes, sweep second. Date corrector. Stop second device. 28.800 vibrations per hour, 4Hz. 21 Jewels.

## FUNCTIONS

—

- 1 Hour hand of the watch
- 2 Minute hand of the watch
- 3 Second hand of the watch
- 4 Date indicator
- 5 24-hour hand



Ø41

Ø36.4

## TO SET THE TIME AND DATE

—

- 1** Normal position. This position allows you to wind up your watch manually. Pull the crown to position 2.
- 2** Date corrector and setting the 24-hour hand. Turn the crown counterclockwise to correct the date and clockwise to set the 24-hour hand.
- 3** Time setting position. Turn the crown counterclockwise setting the local time. Remember to always push the crown back to final position 1. Always have the crown in position 1 while submerged under water.



ROYAL STEEL WORLDTIMER



## WATCH CARE

---

The quality of the materials and details in your Sjöo Sandström watch are very high, but avoid dropping the watch on hard surfaces or subjecting it to extreme conditions. Like any other high-precision instrument, the watch needs regular service in order to work perfectly.

Mechanical movement consist many moving parts which need to be in good condition. Avoid using the watch in direct contact with harsh solvents, perfumes, petrol, strong glues etc. The leather straps have a limited resistance to moisture and sweat. The gaskets keep your

watch water-resistant, but they are constantly exposed to cosmetics, temperature changes and other environmental conditions, and we therefore recommend you to check the water-resistance of your watch every 12 months at an authorized service center.

We recommend you to gently clean the watch and steel bracelet with a small soft brush using mild soap and fresh water.

## IN WATER

---

Water resistance is measured in bars (unit of precision, 1 bar being approximately equivalent to 1 atmosphere [ATM]), and the watch is tested for a certain period of time within the informed bar scale for the specific model. The gaskets in your Sjöö Sandström wristwatch are constantly subjected to dust, temperature differences etc. In time they will need to be changed. Do not use the crown or buttons while submerged under water.

When your watch has been used in salt water or chlorinated water, it should be rinsed with fresh water and then dried with a clean towel. To ensure that your watch remains water-resistant, an authorized watchmaker should check it once

a year. Should moisture enter the watch, immediately hand it in to an authorized watchmaker.

Like all leather objects (shoes, gloves etc.) a leather strap needs to be carefully cared for in order to maintain its beauty in the long term. Protect leather strap from water, perspiration, damp, grease, perfume, cosmetics or chemicals and avoid excessive exposure to the sun.

## SERVICE

---

We recommend you to get a regular service every 4 to 5 years at an authorized service center to keep your Sjöö Sandström watch in good condition. Check the water resistance of your watch every 12 months.

If you need to have your Sjöö Sandström watch repaired, please contact your nearest authorized boutique or the workshop in Stockholm.

Our workshop is located on Ringvägen 50 C in Stockholm. You can also send your watch to us. Make sure to enclose your name, address, phone number, email

address and a brief description of the issue.

If you send from a non EU country, we recommend you to send the package with DHL and label it “Temporary import, contains watch for service – will return after repair”.

## MAINTENANCE

---

Avoid placing the watch or movement on electronic devices liable to generate strong magnetic fields.

After a swim in the sea, always rinse the watch under fresh water.

Always place the crown in the neutral position to prevent water from entering the mechanism.

Avoid shocks, i.e. both physical knocks and sudden changes in temperature.

Clean water-resistant cases and metallic bracelets with a toothbrush and soapy water, before drying with a soft cloth.

Avoid direct contact with solvents,

detergents, perfumes, cosmetics and other chemical products.

Avoid extreme temperatures (greater than 60° or less than 0° C).

Have the watch's water-resistance checked periodically, since it may be affected by natural wear of the seals or accidental shocks inflicted on certain components such as the crown.

Like all leather objects (shoes, gloves, etc) a leather strap needs to be carefully cared for in order to maintain its beauty in the long term. Protect leather straps from water, perspiration, damp, grease, perfume, cosmetics or chemicals, and avoid excessive exposure to the sun.

## WARRANTY

---

Every Sjöo Sandström wristwatch is hand assembled with the purpose of functioning perfectly from the day of purchase and for a long time to come. This two year international warranty covers any defects in the material and workmanship of your watch at the time of delivery.

To validate Your warranty, the enclosed international warranty card must be dated and stamped by an official Sjöo Sandström retailer at the time of purchase.

© 2016 Sjöo Sandström Sweden AB  
Ringvägen 50 C SE-118 67 Stockholm, Sweden  
Phone: +46 (0)8 791 71 00  
sales@sjoosandstrom.se

Follow our journey:  
[www.sjoosandstrom.se](http://www.sjoosandstrom.se)  
[www.instagram.com/sjoosandstrom](http://www.instagram.com/sjoosandstrom)  
[www.facebook.com/sjoosandstrom](http://www.facebook.com/sjoosandstrom)



[WWW.SJOOSANDSTROM.SE](http://WWW.SJOOSANDSTROM.SE)

The logo consists of two stylized, serif 'S' characters. The top curves of the two 'S' characters are connected at their peaks, forming a triangular shape. The middle bars of the 'S' characters are also connected, creating a central horizontal bar.  
**SJÖ SANDSTRÖM**  
STOCKHOLM